

*jura*®



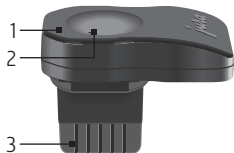
## Wireless Transmitter

Instructions for use

### Proper use

The Wireless Transmitter may only be used with specified JURA interfaces. It provides wireless communication between the JURA Cool Control and the coffee machine, which must be equipped with the JURA Smart Connect (for compatible machines, see [www.jura.com](http://www.jura.com)). Use for any other purpose will be deemed improper. JURA cannot accept any responsibility for the consequences of improper use.

### Overview of Wireless Transmitter



- 1 LED: Indicates the status of the Wireless Transmitter
- 2 Reset button: To connect the Wireless Transmitter to the coffee machine
- 3 Connector: Plugs into the Cool Control's interface

### Installation

- ▶ Plug the Wireless Transmitter into the Cool Control's interface.  
The Wireless Transmitter switches on automatically.

### LED indicators

- LED does not light up: The Cool Control is switched off; the Wireless Transmitter is not being supplied with power.
- LED lights up: The wireless connection between the Wireless Transmitter and the coffee machine has been established.
- LED flashes (1x / second): Attempting to establish a wireless connection.

## Connecting to the coffee machine

- i** Some JURA coffee machines have an automatic connect function (refer to the machine's instructions for use).
- i** Please note that the Smart Connect fitted in the coffee machine can only connect with either one Cool Control or one JURA app.
  - ▶ Position the Cool Control near the coffee machine (a maximum of 0.5 m away).
  - ▶ Switch on the Cool Control and the coffee machine.
  - ▶ Press the reset button of the Smart Connect fitted in the coffee machine (e.g. with a paper clip).
  - ▶ Then (within 30 sec.) press **and hold** the reset button of the Wireless Transmitter until the LED lights up to indicate the successful connection.

If a device is switched off and then on again, the wireless connection is re-established automatically.

